

ServiceNow.

CBC L44

Drawings For Confirmation

April 2022

Steelcase®

Steelcase Office Solution
Suites 26.01 & 27.01, Level 26 & 27,
The Gardens South Tower, Mid Valley City,
Lingkaran Syed Putra, 59200 Kuala Lumpur.
Tel : +60 3 2027 6000 | Fax : +60 3 2283 1418

ALL DIMENSIONS IN MM

PRODUCTS:

MIGRATION SE PRO
UPV SERIES

FINISHES:

PAINT: STANDARD
LPL: STANDARD
FABRIC CODE: STANDARD
FABRIC GROUP: STANDARD
WOOD: N/A
SA: N/A

NOTES:

CHECKED BY SPECIALS

☒ YES ☐ NO

GENERAL NOTES :

COPYRIGHT OF ALL DESIGNS AND DATA SHOWN IN THIS DRAWING IS RETAINED BY STEELCASE OFFICE SOLUTIONS (M) SDN. BHD. WRITTEN PERMISSION IS REQUIRED FOR ANY USE AND/OR REPRODUCTION. ALL PRINTS, SPECIFICATIONS AND COPYRIGHTS ARE THE PROPERTY OF STEELCASE OFFICE SOLUTIONS AND SHALL BE RETURNED ON COMPLETION OF WORKS

CUSTOMER CONFIRMATION

APPROVED

SIREN
18.05.22

DATE :

PROJECT TITLE

SERVICENOW - SINGAPORE

DRAWING TITLE

GENERAL
WORKSTATION
02 SINGLE DESK

DRAWN: INTW. LAST AHMAD ZS DATE: 4/19/2022

CHECKED: HAMU SCALE: A3

SERVICENOW_SA_0001_A1_L10

PROJECT: 20210710/SERVICE NOW/DESIGN/210113/SERVICENOW_SA_0001_A1_L10

REV.

PLAN VIEW 1:25 ON A3

SIDE VIEW 1:20 ON A3

FRONT VIEW

CMS ATHENA ABOVE DESK
* WITH 1 POWER SOCKET
* WITH HELIPAD 15W
* WITH DUAL A+C USB 30W

SPECIAL RECTANGULAR WORKSURFACE
* SIZE: W1200(1175) D800(750)
* WITH SCALLOP, W300 D30
* CHAMFERED EDGING 3 SIDES EXCEPT SCALLOP SIDE

MIGRATION SE PRO BASE FOR RECT
DESK - EXT HEIGHT
* SIZE: FOR W1400 D800
* WITH 4 PRESET CONTROLLER
* WITH ROUND COLUMN

SPECIAL CABLE TRAY TO HOUSE
POWER STRIP

CMS ATHENA ABOVE DESK
* WITH 1 POWER SOCKET
* WITH HELIPAD 15W
* WITH DUAL A+C USB 30W

ISOMETRIC

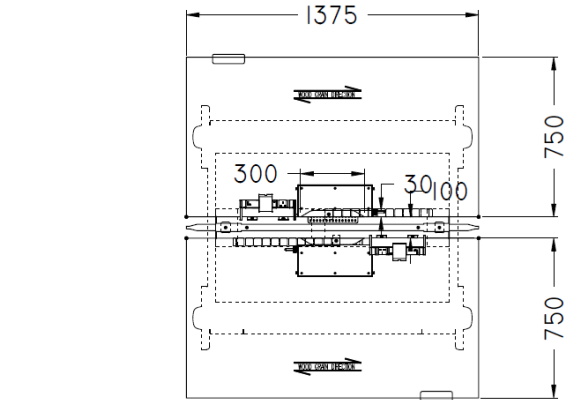
LEGS:



CMS (In Black):

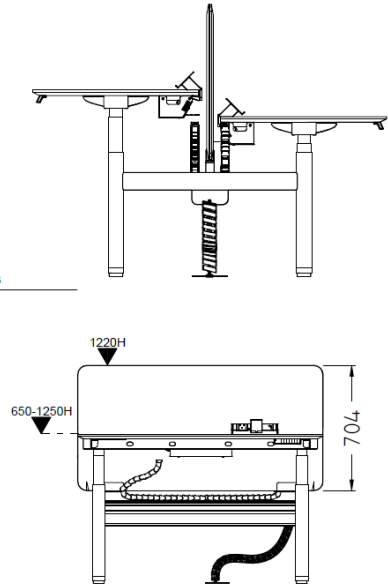


WS2: Dual Bench Desk



PLAN VIEW 1:25 ON A3

SIDE VIEW 1:20 ON A3



FRONT VIEW

Steelcase®

Steelcase Office Solution
Suites 26.01 & 27.01, Level 26 & 27,
The Gardens South Tower, Mid Valley City,
Lingkaran Syed Putra, 59200 Kuala Lumpur.
Tel : +60 3 2027 6000 | Fax : +60 3 2283 1418

ALL DIMENSIONS IN MM

PRODUCTS:

MIGRATION SE PRO
UPV SERIES

FINISHES:

PAINT: STANDARD
LPL: STANDARD
FABRIC CODE: STANDARD
FABRIC GROUP: STANDARD
WOOD: N/A
SA: N/A

NOTES:

CHECKED BY SPECIALS

☒ YES ☐ NO

GENERAL NOTES :

COPYRIGHT OF ALL DESIGNS AND DATA SHOWN IN
THIS DRAWING IS RETAINED BY STEELCASE OFFICE
SOLUTIONS (M) SDN. BHD.
WRITTEN PERMISSION IS REQUIRED FOR ANY USE
AND/OR REPRODUCTION. ALL PRINTS,
SPECIFICATIONS AND COPYRIGHTS ARE THE
PROPERTY OF STEELCASE OFFICE SOLUTIONS AND
SHALL BE RETURNED ON COMPLETION OF WORKS

CUSTOMER CONFIRMATION

APPROVED

SIGN
NAME
DATE

SIREN
18.05.22

PROJECT TITLE

SERVICENOW - SINGAPORE

DRAWING TITLE

GENERAL
WORKSTATION
CLUSTER OF 2

INITIAL LAST
DRAWN : AHMAD ZS DATE : 4/19/2022

CHECKED: HAMI SCALE: A3

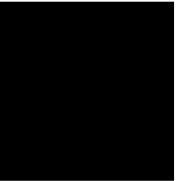
SERVICENOW_SIS_SWS_LR_LF0
PROJECT 20210710SERVICENOW_SIS_SWS_LR_LF0
REV. 1

TOP:



Acacia 2LAT

LEGS:



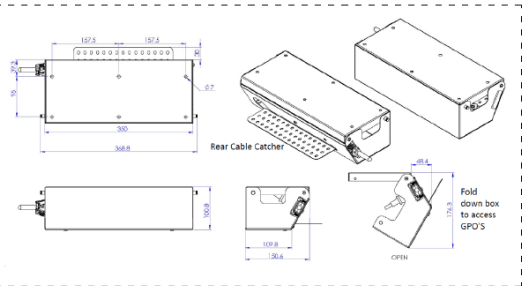
Black

SCREEN:



Iron K613

CMS (In Black):



SPECIAL CABLE TRAY TO HOUSE
POWER STRIP



CMS ATHENA ABOVE DESK
* WITH 1 POWER SOCKET
* WITH HELIPAD 15W
* WITH DUAL A+C USB 30W

ISOMETRIC

CMS ATHENA ABOVE DESK
* WITH 1 POWER SOCKET
* WITH HELIPAD 15W
* WITH DUAL A+C USB 30W

CENTRE SCREEN AND BRACKET,
FIXED SCREEN
* FOR W1400, H1220

SPECIAL RECTANGULAR WORKSURFACE
* SIZE: W1400(1375) D800(750)
* WITH SCALLOP, W300 D30
* CHAMFERED EDGING 3 SIDES EXCEPT
SCALLOP SIDE

MIGRATION SE PRO BASE FOR RECT
DUAL BENCH - EXT HEIGHT
* SIZE: FOR W1400 D800
* WITH 4 PRESET CONTROLLER
* WITH ROUND COLUMN

Steelcase®

Steelcase Office Solution
Suites 26.01 & 27.01, Level 26 & 27,
The Gardens South Tower, Mid Valley City,
Lingkaran Syed Putra, 59200 Kuala Lumpur.
Tel : +60 3 2027 6000 | Fax : +60 3 2283 1418

ALL DIMENSIONS IN MM

PRODUCTS:

LXICON

FINISHES:

PAINT: STANDARD
LPL: STANDARD
FABRIC CODE: STANDARD
FABRIC GROUP: STANDARD
WOOD: NA
SA: XXXXX

NOTES:

CHECKED BY SPECIALS

☒ YES ☐ NO

GENERAL NOTES :

COPYRIGHT OF ALL DESIGNS AND DATA SHOWN IN THIS DRAWING IS RETAINED BY STEELCASE OFFICE SOLUTIONS (M) SDN. BHD. WRITTEN PERMISSION IS REQUIRED FOR ANY USE AND/OR REPRODUCTION. ALL PRINTS, SPECIFICATIONS AND COPYRIGHTS ARE THE PROPERTY OF STEELCASE OFFICE SOLUTIONS AND SHALL BE RETURNED ON COMPLETION OF WORKS

CUSTOMER CONFIRMATION

APPROVED

SIGNATURE: SIREN
DATE: 18.05.22

PROJECT TITLE

SERVICENOW - SINGAPORE

DRAWING TITLE

MEETING TABLE
01

DRAWN: INITIAL LAST DATE : 4/19/22
ZS ZWANG2

CHECKED: HAMI SCALE: A3

SERVICE NOW_SG_CMTD1_R_L_F0

PROJECT 20210101 SERVICE NOW DESIGNED 20210101 SERVICE NOW_SG_SWS_L_R_1-402

REV.

PLAN VIEW 1:25 ON A3

SIDE VIEW 1:20 ON A3

FRONT VIEW 1:25 ON A3

SPECIAL CABLE TRAY TO HOUSE POWER STRIP
* DIMENSION: 500W 150D 133H
* WITH CUTOUT BOTH SIDE, PRE-PUNCH,
90MM X 45MM
* SCREW UNDER THE TOP DIRECTLY

SPECIAL LEXICON SOCIAL TABLE

- * D SHAPE WORKTOP
- * 1370W 1370D 750H
- * WITH LPL FINISHES
- * WITH ROUND DISC BASE
- * WITH SEPCIAL BRACKETS CONNCT WALL AND TOP
- * WITH 400W WOOD FLIPPER MATCH TOP WITH BRUSH
- * WITH SPECIAL CABLE TRAY
- * WITH CHAMFERED EDGE 3 SIDES EXCEPT WALL SIDE

ISOMETRIC



Black

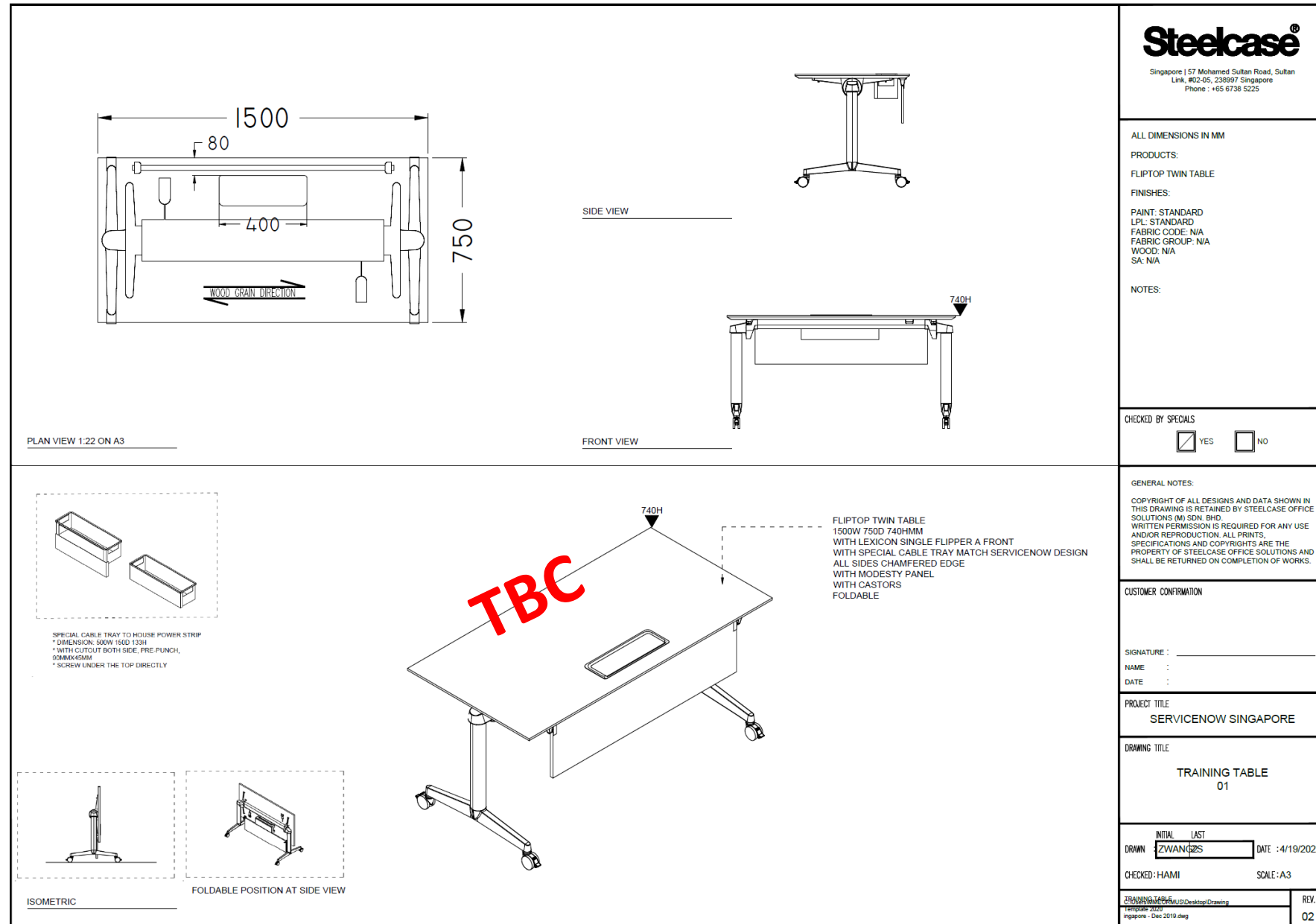
<p>Singapore 57 Mohamed Sultan Road, Sultan Link, #02-05, 238997 Singapore Phone : +65 6738 5225</p>	
<p style="text-align: center;">PLAN VIEW 1:22 ON A3</p>	<div style="text-align: center;"> SIDE VIEW </div> <div style="text-align: center; margin-top: 20px;"> FRONT VIEW </div>
TBC	
<p>CHECKED BY SPECIALS</p> <div style="display: flex; justify-content: space-around;"> <input checked="" type="checkbox"/> YES <input type="checkbox"/> NO </div>	
<p>GENERAL NOTES:</p> <p>COPYRIGHT OF ALL DESIGNS AND DATA SHOWN IN THIS DRAWING IS RETAINED BY STEELCASE OFFICE SOLUTIONS (M) SDN. BHD. WRITTEN PERMISSION IS REQUIRED FOR ANY USE AND/OR REPRODUCTION. ALL PRINTS, SPECIFICATIONS AND COPYRIGHTS ARE THE PROPERTY OF STEELCASE OFFICE SOLUTIONS AND SHALL BE RETURNED ON COMPLETION OF WORKS.</p>	
<p>CUSTOMER CONFIRMATION</p> <p>SIGNATURE : _____</p> <p>NAME : _____</p> <p>DATE : _____</p>	
<p>PROJECT TITLE</p> <p style="text-align: center;">SERVICENOW SINGAPORE</p>	
<p>DRAWING TITLE</p> <p style="text-align: center;">TRAINING TABLE 01</p>	
<div style="display: flex; align-items: center;"> <div style="margin-left: 20px;"> <p>FLIPTOP TWIN TABLE 1500W 750D 740HMM WITH CMS CENTRA 2 POWER 2 DATA AND DUAL USB AT CENTER WITH MODESTY PANEL WITH CASTORS FOLDABLE</p> </div> </div>	
<p>DRAWN INTWL LAST ZWANGES DATE : 4/4/2022</p> <p>CHECKED: HAMU SCALE: A3</p>	
<p><small>STEELCASE Singapore - Dec 2019.dwg</small></p>	
REV.	01

LEGS:

SIREN
18.05.22

Black

Flip Top Twin (Option 2)



TOP:



Acacia 2LAT

APPROVED (on finishes) Option Type to be confirmed by SN

LEGS:

SIREN
18.05.22



Black