

Steelcase®

Steelcase Office Solution  
Suites 26.01 & 27.01, Level 26 & 27,  
The Gardens South Tower, Mid Valley City,  
Lingkaran Syed Putra, 59200 Kuala Lumpur.  
Tel : +60 3 2027 6000 | Fax : +60 3 2283 1418

ALL DIMENSIONS IN MM

PRODUCTS:

MIGRATION  
LEXICON

FINISHES:

LPL : 24L0 : GRAPHITE WALNUT  
PAINT : 7360 : MERLE  
PET : BZ03 : DARK GREY

NOTE:

CHECKED BY SPECIALS



YES



NO

GENERAL NOTES:

COPYRIGHT OF ALL DESIGNS AND DATA SHOWN IN THIS DRAWING IS RETAINED BY STEELCASE OFFICE SOLUTIONS (M) SDN. BHD. WRITTEN PERMISSION IS REQUIRED FOR ANY USE AND/OR REPRODUCTION. ALL PRINTS, SPECIFICATIONS AND COPYRIGHTS ARE THE PROPERTY OF STEELCASE OFFICE SOLUTIONS AND SHALL BE RETURNED ON COMPLETION OF WORKS.

CUSTOMER CONFIRMATION

3BBD4H76 I ;F:  
5A? ? 7@F

SIGNATURE : \_\_\_\_\_

NAME : \_\_\_\_\_

DATE : \_\_\_\_\_

PROJECT TITLE

SERVICENOW\_15th FLOOR\_HYD

DRAWING TITLE

CABIN WORKSTATION

INITIAL LAST

DRAWN : TBI

DATE: 15-APR-20

CHECKED : KUNTAL

SCALE: A3

SERVICE NOW\_HYD15\_MWS\_R0\_F0.DWG

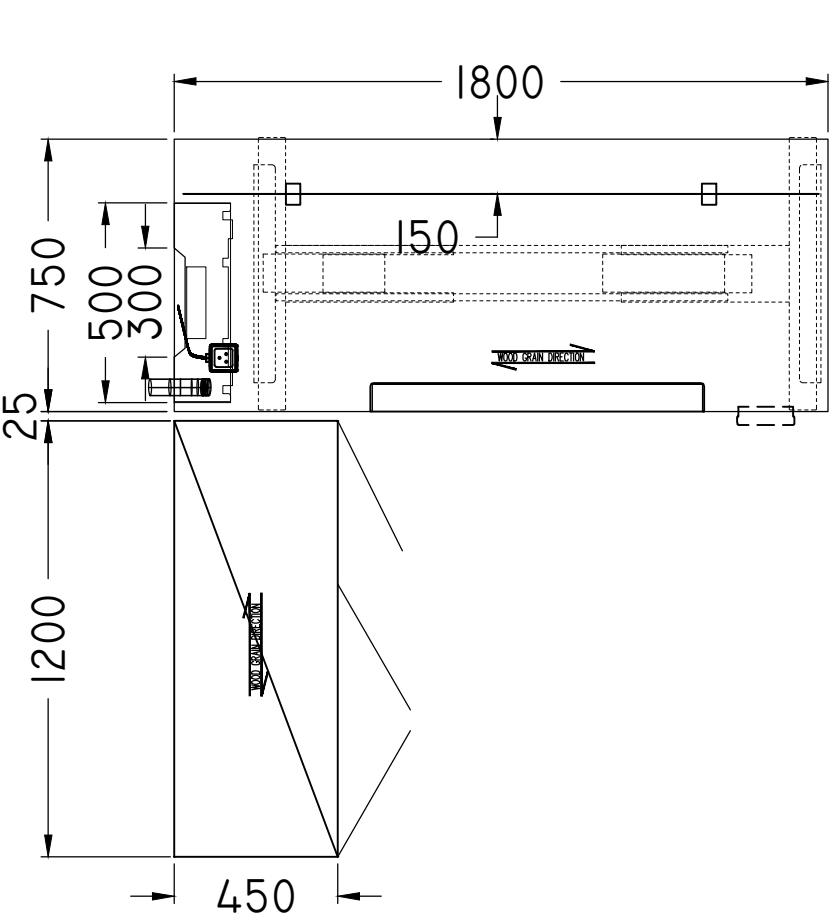
C:\Users\TBI\OneDrive - STEELCASE  
INC\3\BBDH\PROJECTS\HYDRABAD\SERVICENOW\_L15\_LATEST  
ORDERTYPICALSVR3

TIME

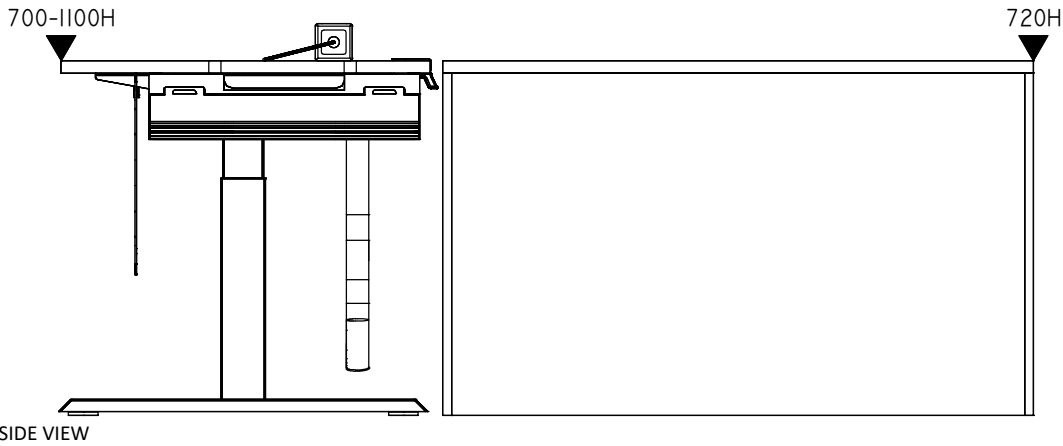
P5:52 PM  
S5:50 PM

REV.

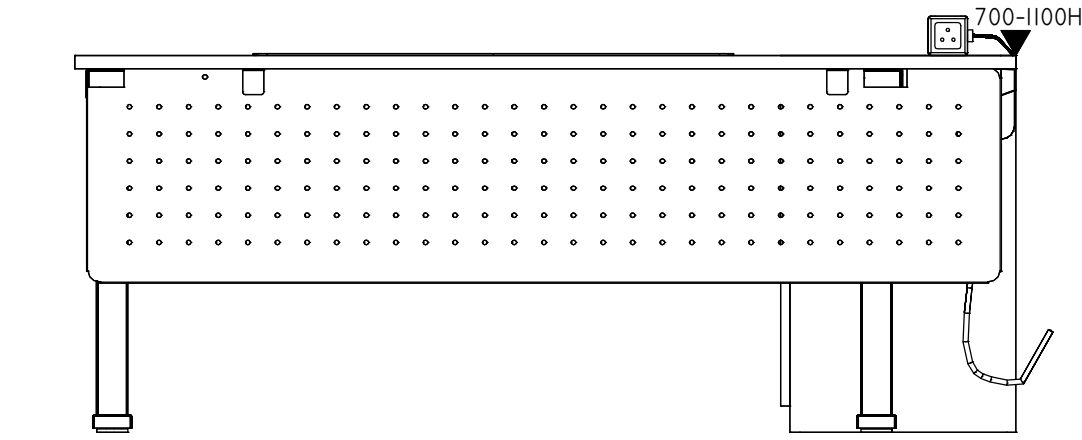
03



PLAN VIEW 1:16 ON A3



SIDE VIEW



FRONT VIEW

SPECIAL LPL WORKSURFACE,  
# SIZE : 1800W 750D,  
# 25MM LOW PRESSURE LAMINATE,  
# WITH 300W 30D SCALLOP CUT AS PER THE TYPICAL  
# WITH SOFT EDGE.

SPECIAL LPL STORAGE,  
# SIZE : 1200W 450D 720H,  
# WITH 25MM TOP,  
# WITH RECESSED STEEL HANDLES,  
# WITH LOCKS.

FOR WIRE MANAGEMENT  
CABLE SOCK TO BE  
CONSIDERED SAME AS  
WORKSTATIONS

SPECIAL MIGRATION DESK,  
# SIZE: 1800W 750D,  
# MOTORIZED HEIGHT ADJUSTABLE MECHANISM,  
# HT ADJ RANGE: 700MM TO 1100MM,  
# WITH 4 PRESET CONTROLLER,  
# WITH INDIA POWER OPTION.

SPECIAL UPPER CABLE TRAY METAL + PET,  
# SIZE: 500W 150D 180H.  
# MOUNTING PLATE FIXING LOCATION WILL BE  
SPECIAL TO ACCOMMODATE APPLE ADAPTER  
# WITH CUT OUTS AS ADVISED BY SALES

SPECIAL METAL PERFORATED MODESTY PANEL,  
# SIZE : 1750W 400H,  
# WITH BRACKETS TO MOUNTED TO  
WORKSURFACE.

ISOMETRIC

